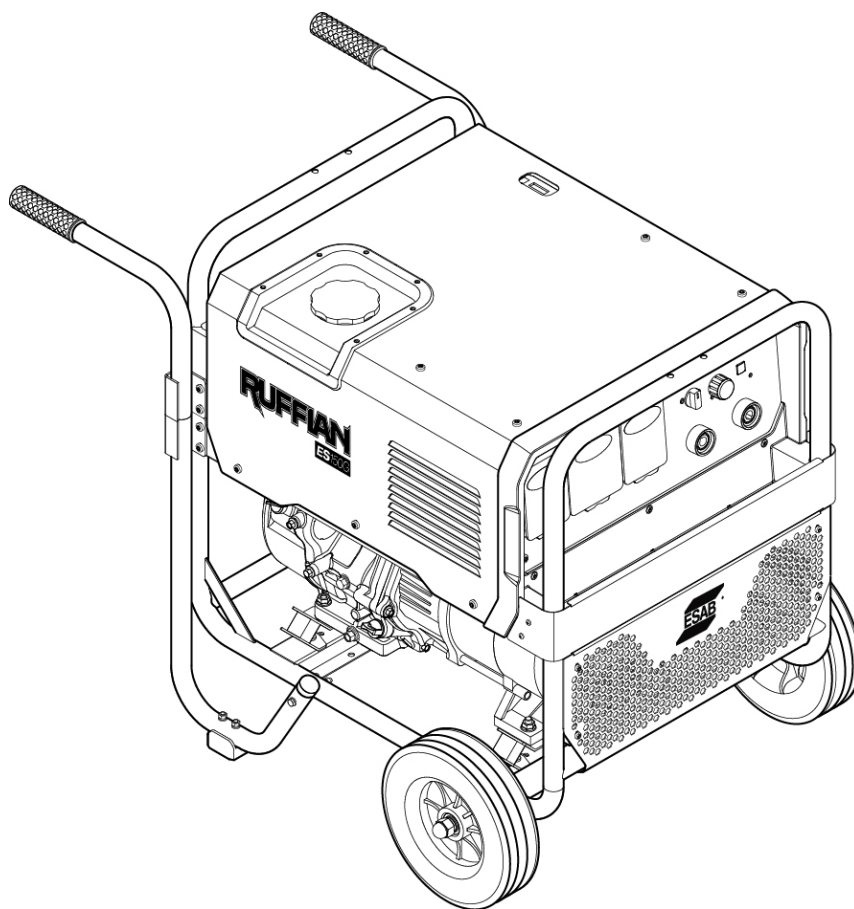




Ruffian ES 150G EDW

Engine Driven Welder MMA 150A



Spare parts list

0463 906 001 GB 20250410

Valid for: Serial number:
HA229YY-XXXXXX

Ordering no.	Denomination	Type	Notes
0707 070 150	Engine Driven Welder	RUFFIAN ES 150EDW	CSA
0463 905 001	Instruction manual	RUFFIAN ES 150EDW	CSA
0463 906 001	Spare parts list manual	RUFFIAN ES 150EDW	CSA
0463 907 001	Service manual	RUFFIAN ES 150EDW	CSA

Spare parts and wear parts can be ordered through your nearest dealer, see esab.com. When ordering, please state product type, serial number, designation and spare part number in accordance with the spare parts list. This facilitates dispatch and ensures correct delivery.

Maintenance and repair work should be performed by an experienced person, and electrical work only by a trained electrician. Use only recommended spare parts.

For accessories to the product, see the instruction manual.

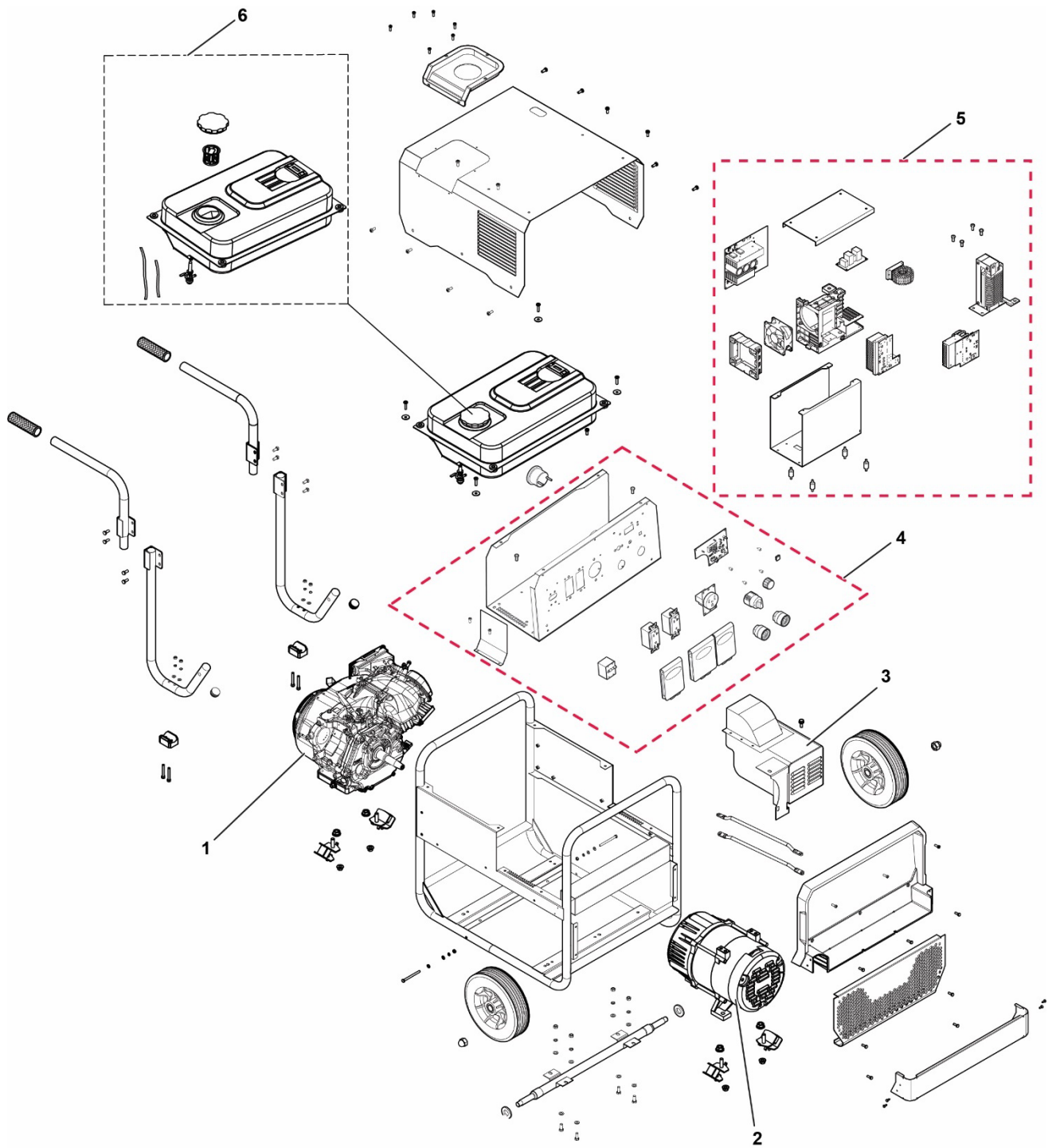
The three last digits in the document number of the manual show the version of the manual. Make sure to use a manual with a serial number or software version that corresponds with the product, see the front page of the manual.

- 1 SPARE PARTS.....4**
- 1.1 Full Module overview.....4**
- 1.2 Structure module6**
- 1.3 Electric cabinet module.....9**
- 1.4 Welding module11**
- 1.5 Fuel tank module13**
- 1.6 Generator module14**

1 SPARE PARTS

1.1 Full Module overview

Item	Qty	Ordering No.	Denomination	Notes	Component designation
1	1		Kohler engine	MODEL CH440-3283/hand start/ without fuel tank and muffler.	
1A			Spark plug	Not shown in illustration.	
1B			Air filter	Not shown in illustration.	
1C			Engine oil	Not shown in illustration.	API class SJ
2	1	0707 071 035	Generator		
3	1	0707 071 036	Muffler	with cover for Kohler engine CH 440	
4	1		Electric cabinet	For More details, see Electric cabinet section.	
5	1		Welding module	For More details, see Welding module section.	
6	1	0707 071 021	Fuel tank	For More details, see fuel tank module section.	
Details of the remaining parts are included in the Structure module section.					



1.2 Structure module

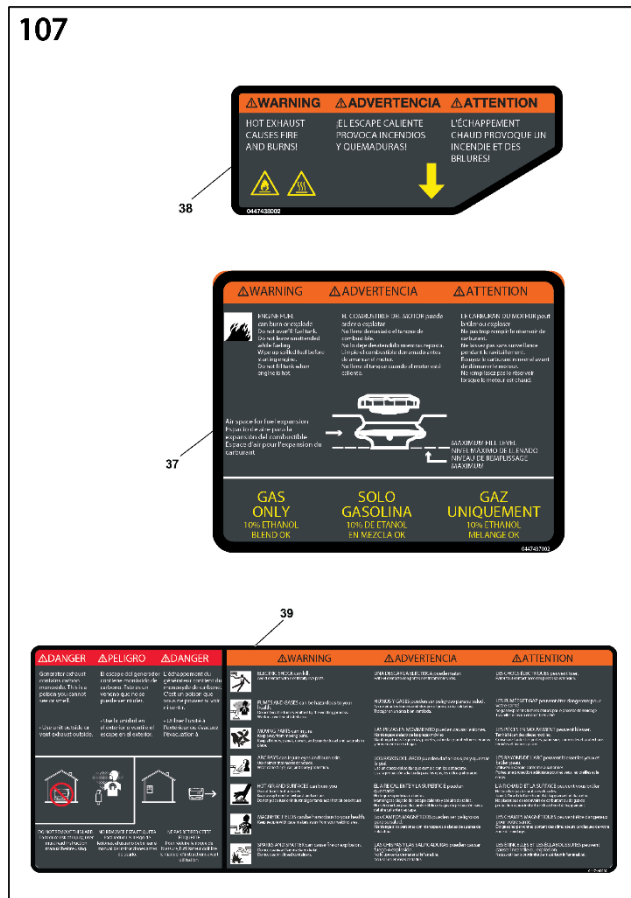
Item	Qty	Ordering No.	Denomination	Notes	Component designation
1	16		Hexagon pan head screw M5*16	Black zinc coated, See item 104	
2	1	0707 071 025	Fuel inlet cover		
3	1	0707 071 003	Shell		
4	18		Hexagon pan head screw M6*16	Black zinc coated, See item 103	
5	1		Hexagon screw M8*16	Black zinc coated	
6	2		Wheel 13B-250*67	Black, See item 101	
7	1	0707 071 036	Muffler	1/6KW/side/with cover / for kohler engine CH 440	
8	1		Front plastic cover	PA66+30%GF, See item 104	
9	1		Cable	Between Reactance and positive output connector	
10	1		Cable	Between the secondary rectifier PCB and negative output connector	
11	1		Front metal cover plate	See item 104	
12	1		Front protective plate	See item 104	
13	4		Cross recess pan head screw (tapping screw)	ST4.2*13-F/ with flat pad outer diameter 9/ black zinc coated, See item 104	
14	4		Machine feet	See item 102	
15	4		Hexagon nut with flange M8/full teeth	Blue and white zinc coated, See item 102	
16	4		Hexagon nut with flange M10/full teeth	Blue and white zinc coated, See item 102	
17	1	0707 071 007	Axle		
18	4		Hexagon screw M8*25/8.8	Black zinc coated	
19	8		Flat washer	8 black zinc coated	
20	4		Spring washer	8 black zinc coated	
21	4		Hexagon nuts M8	Black zinc coated	
22	2		Flat washer C grade	20 black zinc coated	
23	2		Cap nut	M16 black zinc coated, See item 101	
24	6		Hexagon nuts M6	Black zinc coated, See item 103	
25	6		Spring washer	6 black zinc coated against salt, See item 103	
26	8		Flat washer	4 black zinc coated, See item 103	
27	2		Hexagon screw M6*70	Black zinc coated against salt	
28	1		Rack		
29	4		Hexagon socket cap screws M6*45	Black zinc coated, See item 103 & 106	
30	2		Cushioning pads	INVERPOWER195L/black/rubber/, See item 103 & 106	
31	2		End enclosure	See item 103	
32	1		Right handle elbow	See item 103	
33	1		Right upper handle elbow	See item 103	
34	2	0707 071 006	Rubber handle sleeve	See item 103	
35	1		Left handle elbow	See item 103	

1 SPARE PARTS

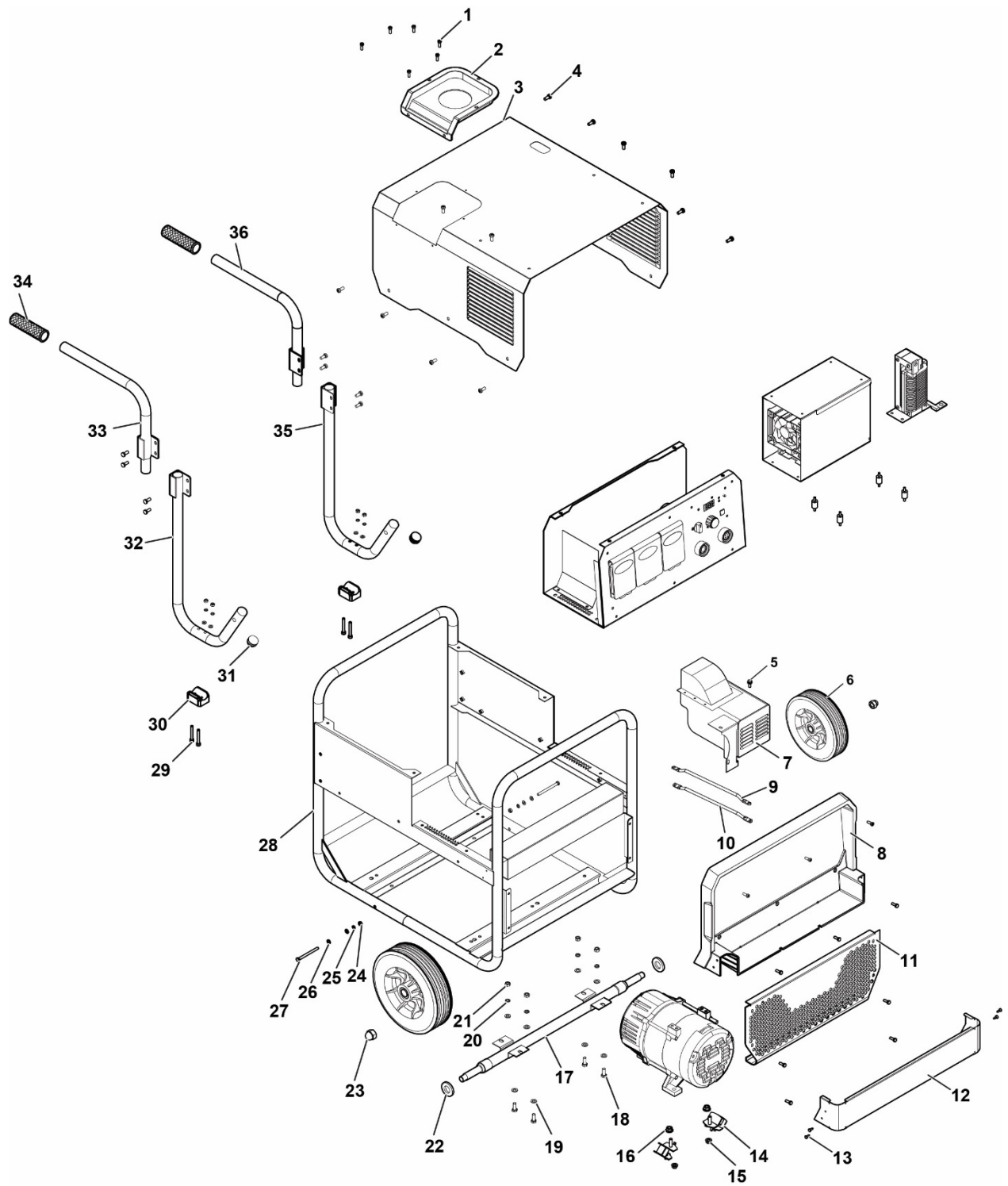
36	1		Left upper handle elbow	See item 103	
37	1		GAS ONLY Warning Label		
38	1		HOT Exhaust Warning Label		
39	1		Generator+weider +Warning label		

SPARE PARTS SETS:

Item	Qty	Ordering No.	Denomination	Notes
101	1	0707 071 047	Rubber wheel kit	Including items 6 (2 pcs) & 23 (2 pcs)
102	1	0707 071 052	Shock absorber feet kit of rack, engine, and generator	Including items 14 (4 pcs), 15 (4 pcs), and 16 (4 pcs),
103	1	0707 071 048	Rubber handle sleeve kit	Including items 4 (4 pcs), 24 (4 pcs), 25 (4 pcs), 26 (4 pcs), 29 (4 pcs), 30 (2 pcs), 31 (2 pcs), 32, 33, 34 (2 pcs), 35 and 36.
104	1	0707 071 051	Front plastic-metal cover-plate kit	Including items 1 (10 pcs), 8, 11, 12, and 13 (4 pcs)
105	1	0707 071 001	Lifting eye kit (including related hardware)	
106	1	0707 071 005	Cushion Pad Kit	Including items 29 (4 pcs) and 30 (2 pcs)
107	1	0707 071 056	Label Kit	Including items 37 (1 pcs), 38 (1 pcs) & 39 (1 pcs).



1 SPARE PARTS



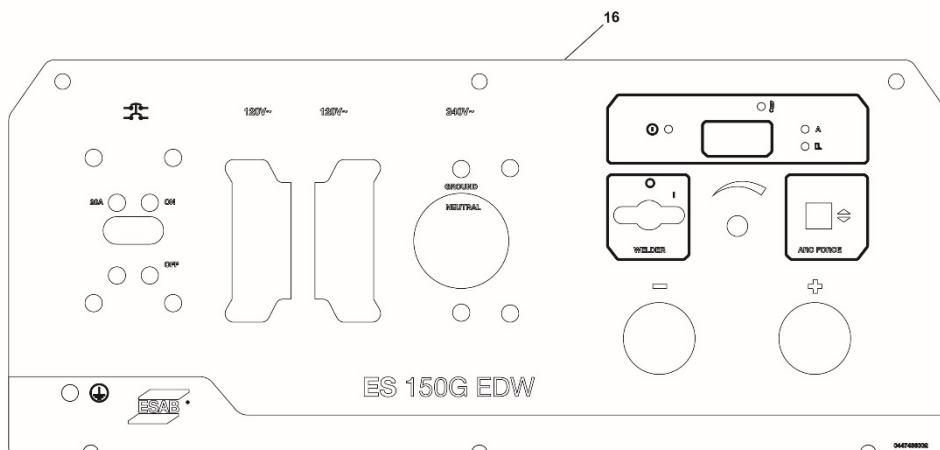
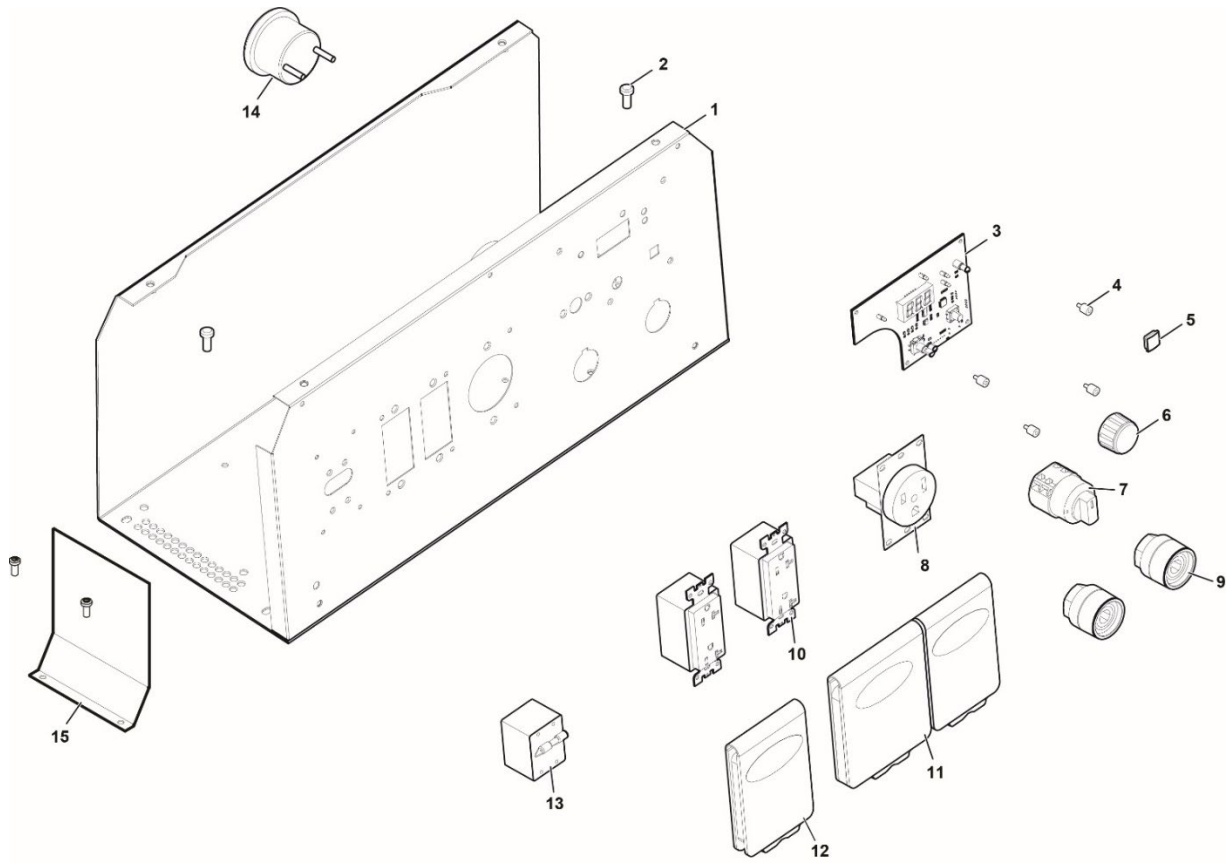
1.3 Electric cabinet module

Item	Qty	Ordering No.	Denomination	Notes	Component designation
1	1		Electric cabinet		
2	6		Hexagon flange screw M6*16	Black zinc coated	
3	1	0707 071 014	Displayer PCB		
4	4		Shock absorber	See item 201	
5	1		Rubber sleeve button 13.5*13.5*6.4	TPR/black/hardness 45 degree /V3.0, See item 202	
6	1	0321 475 893	Potentiometer knob	Control knob / black	
7	1	0464 674 013	Mains Switch 0-1	LW39B-20 4C04/2B 20A/690V/	
8	1	0707 071 034	Power socket USA style/UL	2102S 6-50R/ three holes/50A/250V	
9	2	0707 071 032	OKC connector	DKJ35-70 black	
10	2	0707 071 033	GFCI socket	TS20 20A/125V black	
11	1	0707 071 024	Double connecting socket cover		
12	1	0707 071 023	Single socket cover		
13	1	0707 071 037	MCB (Fuse)	BSB1-2P-20-C 20A/250V	
14	1	0707 071 030	Hour meter	NJS-03/DC12V LCD/shockproof	
15	1	0707 071 012	Baffle		
16	1	0707 071 031	UI label		

SPARE PARTS SETS:

Item	Qty	Ordering No.	Denomination	Notes
201	1	0707 071 045	Shock absorber feet kit 2	Including items 4 (4 pcs)
202	1	0707 071 046	Rubber sleeve button kit	Including items 5 (10 pcs)

1 SPARE PARTS



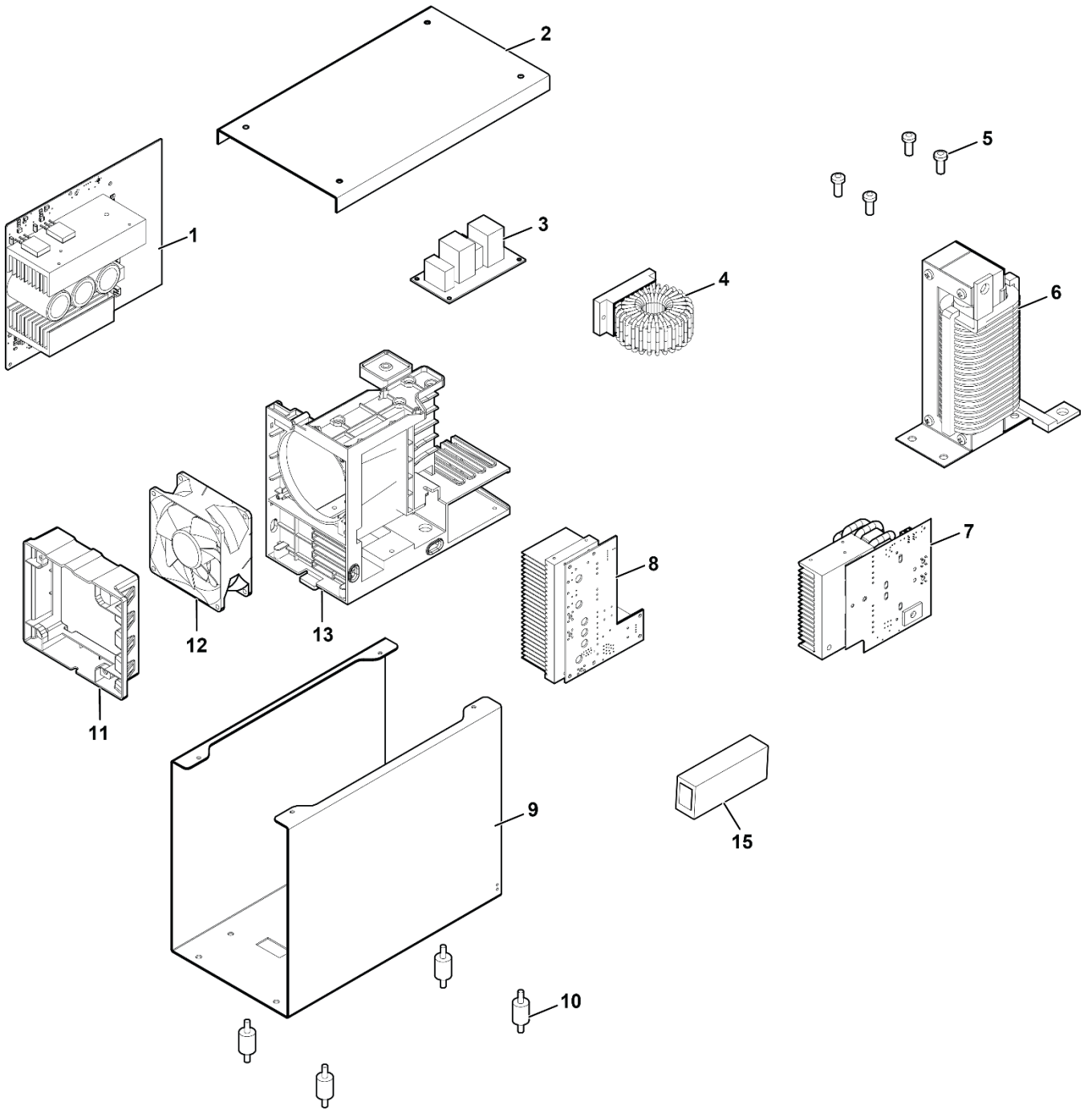
1.4 Welding module

Item	Qty	Ordering No.	Denomination	Notes	Component designation
1	1	0464 673 003	IGBT inverter PCB board		
2	1	0707 071 040	Welding module cover		
3	1	0707 071 016	EMC filter PCB board		
4	1		PFC inductance	T38ESTICK200PRII4.22	
5	4		Cross recess pan head screw M6*20	Black zinc coated	
6	1	0707 071 013	Inductor		
7	1	0707 071 015	Rectifier PCB		
8	1	0464 673 004	PFC PCB		
9	1		Bottom plate of welding module		
10	4		Shock absorber	See item 301	
11	1	0707 071 022	Wind deflector		
12	1	0464 674 003	Fan	RD9238B24H-S	
13	1	0464 670 008	Welding machine holder		
14	1	0707 071 017	Protection sheet	Comes under pos 9 Not shown in illustration	
15	1	0707 071 011	Current Sensor		

SPARE PARTS SETS:

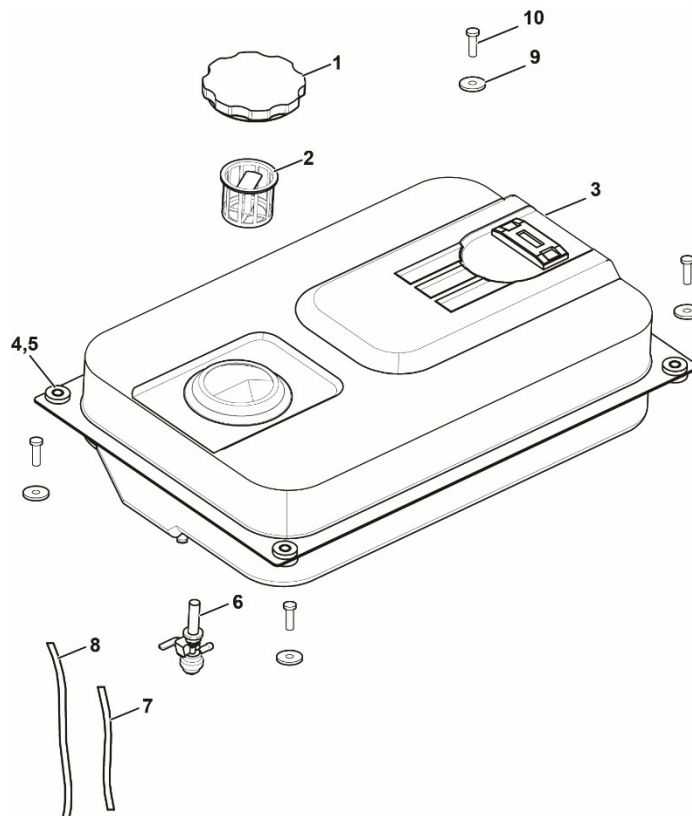
Item	Qty	Ordering No.	Denomination	Notes
301	4	0707 071 044	Shock absorber feet kit 1	Including items 10 (4 pcs)
302	1	0707 071 057	Wiring harness kit for welding module	Including PFC power input cable (1 pcs), PFC power output cable (1 pcs), connecting cable, length 160/V3.0 (1 pcs), Primary input cables for main transformer (2 pcs), Connecting cable between rectifier PCB positive pole to Inductor (1 pcs), Inverter switch to main control PCB connecting cable (1 pcs), connecting cable 130/V1.0 (2 pcs), Earth cable (1 pcs)
303	1	0707 071 010	Welding unit	Including items 1 to 15 and Kit 304
304	1	0707 071 009	Kits of shock absorption rubber of weld module	Comes behind pos 9 (Not shown in illustration)

1 SPARE PARTS



1.5 Fuel tank module

Item	Qty	Ordering No.	Denomination	Notes	Component designation
	1	0707 071 021	Gasoline tank		
1	1	0707 071 041	Fuel tank cap	Fully sealed/height 32_black /INVERPOWER 195L	
2	1	0707 071 040	Strainer of fuel inlet	INVERPOWER 195L	
3	1	0707 071 038	Tank body	Metal_18L_lettering/INVERPOWER 195L	
4	4	0707 071 042	Absorber mat of fuel tank	"I" shape/ black rubber	
5	4	0707 071 043	Cushion liner of fuel tank 8.6*12*12.2	Blue white zinc coating L	
6	1	0707 071 039	Fuel Valve	Zinc alloy/ single thread/M16*1.5 with O-rings /INVERPOWER 195L	
7	1	0707 071 027	Fuel hose \varnothing 4.5 / Ext.dia. \varnothing 8.5	Oil valve to engine /REWIND inner diameter	
8	1	0707 071 027	Fuel hose \varnothing 4.5 /Ext.dia. \varnothing 8.5	Fuel tank to air filter/REWIND inner diameter	
9	4		Flat washer \varnothing 17.5* \varnothing 6.2*2	Black zinc coated	
10	4		Cross recess pan head screw M6*20	Black zinc coated	

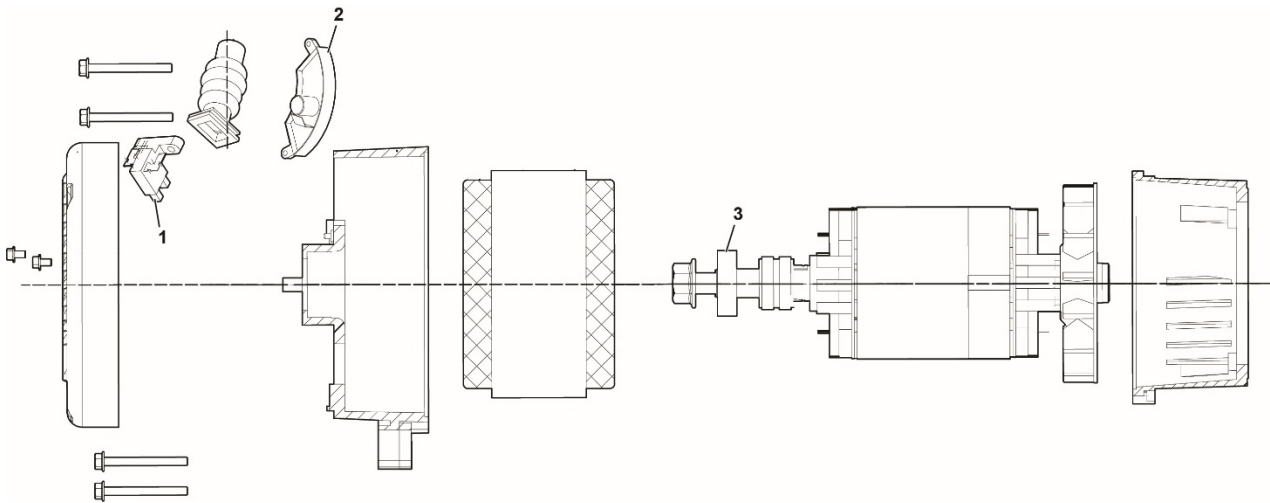


1.6 Generator module

Item	Qty	Ordering No.	Denomination	Notes	Component designation
	1	0707 071 035	Generator 5KW/120V/240V/60Hz	KTW /cone shaft1:5.33/for CH 440 gasoline engine	x
1	1		Brush	5KW, See item 401	
2	1		AVR (auto voltage regulator)	7000W, See item 401	
3	1		Bearing	6204-ZZ, See item 401	

SPARE PARTS SETS:

Item	Qty	Ordering No.	Denomination	Notes
401	1	0707 071 050	Brush-AVR-Bearing kit	Including items 1, 2, and 3





A WORLD OF PRODUCTS AND SOLUTIONS.



For contact information visit <http://esab.com>

ESAB AB, Lindholmsallén 9, Box 8004, 402 77 Gothenburg, Sweden, Phone +46 (0) 31 50 90 00

<http://manuals.esab.com>



CE

